

PORT OF LEWISTON FIBER OPTIC NETWORK



The Port of Lewiston's Fiber Optic Network in downtown Lewiston provides businesses in downtown Lewiston with options for high-speed internet connectivity to global markets.

USEFUL CONTACT INFORMATION

CEDA | www.clearwater-eda.org | 208.746.0015

Clearwater Economic Development Association assists businesses and communities by acting as a conduit to needed resources. They provide small business financing and advising to businesses in our region.

Idaho SBDC | ISBDC@lscs.edu | 208.792.2465

Our local Small Business Development Center offers confidential, no-cost consulting by experienced business professionals; low-cost training in marketing, sales, financials and management; referrals to appropriate banks, attorneys, and accountants; etc.

Valley Vision | www.lewis-clarkvalley.org | 208.799.9083

Valley Vision focuses on business recruitment, local business retention and expansion, and business climate improvement (including infrastructure development and workforce training).

Zoning, Business Licensing | 208.746.1318 | 215 D Street Lewiston, ID

Beautiful Downtown Lewiston | 208-790-1148 | www.beautifuldowntownlewiston.org

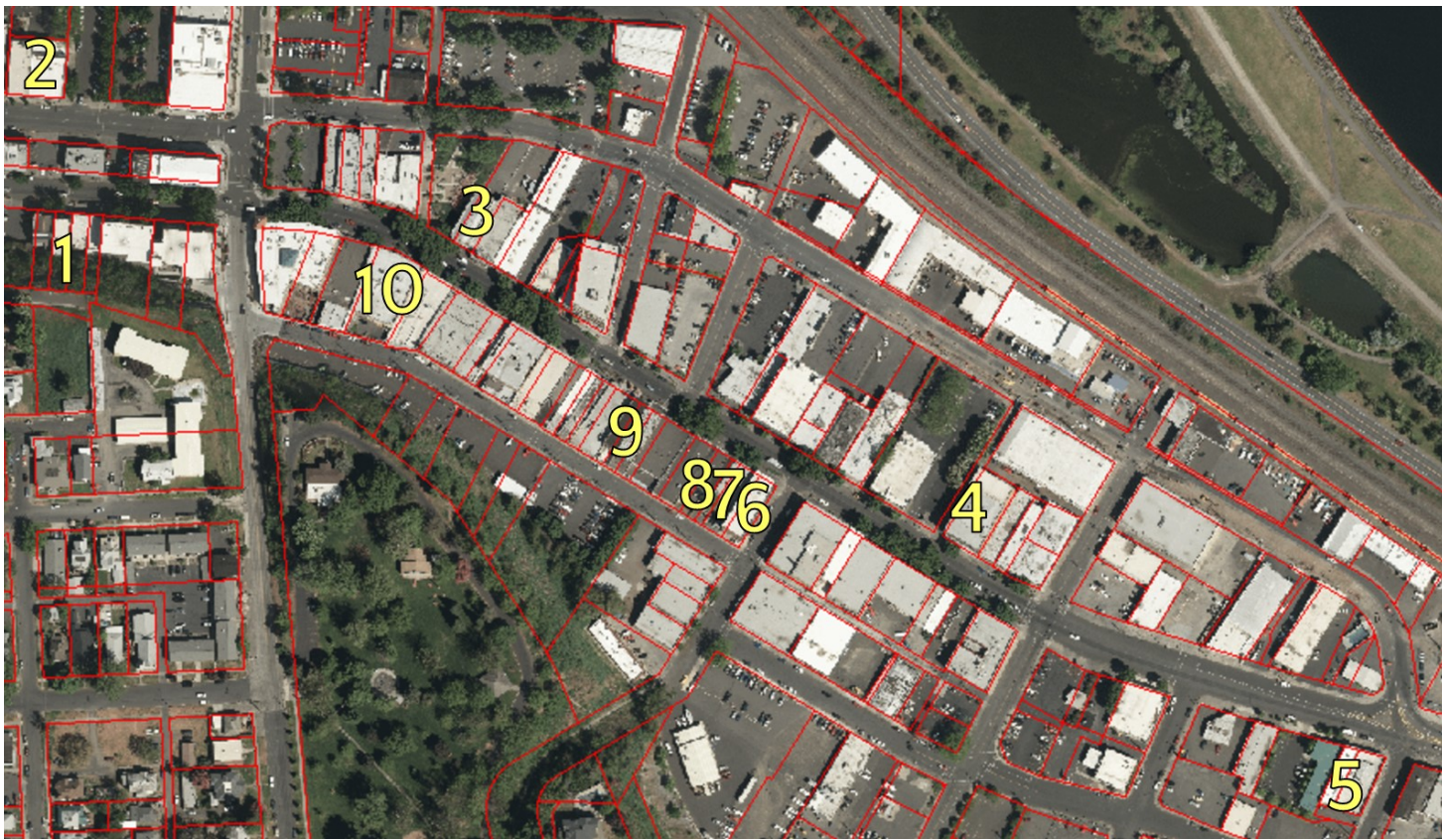


Properties with

Possibilities Tour

JULY 21, 2017

BDL envisions a Downtown Lewiston that is the heart of our community, a bustling mixed-use district rich in culture and art, to which locals and visitors alike are drawn for unique shopping, dining, and recreational activities. Downtown is a place where small businesses thrive, local history is honored, and the community gathers together.



**THANK YOU TO OUR
SPONSORS:**

Port of
Lewiston
Idaho's Seaport

MILLY ARCHITECT

WELL CONNECTED
ELECTRIC

#	Address	Name	Arrive	Depart	Property Square Footage	Last Use of Property	Contact	Phone
1	326 Main St.	Blue Lantern Coffee	8:45 AM	9:05 AM	Gathering location for the Properties with Possibilities Tour			
2, A	313 D St.	Means Building	9:10 AM	9:30 AM	950	Basement level- Red Cross Blood Donation Center	Chuck Christopher	(208) 791-5761
2, B	313 D St.	Means Building	9:10 AM	9:30 AM	700	Specialty Real Estate office. Will allow tenant to participate in choosing new carpet and paint color.		
3	609 Main St.	Odd Fellows Building	9:40 AM	9:50 AM	3,000 sq.'		Ben Harrington	208-790-1320
4	855 Main St.	Masonic Building	9:55 AM	10:20 AM	24,000 not including the basement, 3 levels with 16 ft ceiling height	Masonic Lodge for upper levels and used furniture sales for retail space	Tami Meyers	(509) 552-9492
5	1034 Main St.		10:30 AM	10:40 AM	5,000+ square feet plus some space in the basement which is not rentable	Office space	Dick White	(208) 413-2230
6	816 Main St.	Osmers Building	10:50 AM	11:00 AM	1500 sq.'		Cindi Mader	208-790-3337
7	812 & 814 Main St.		11:00 AM	11:15 AM	Each side of the building has 1,400 square feet of main floor space plus a 792 square foot basement plus crawl space	tattoo parlor and hair salon	Liz Coleman	(310) 903-7534
8	800 Main St.	Newbury Square	11:15 AM	11:30 AM	6500 sq.'	Wholesale fabric store closed 12 years ago. Vacant since.	Vikky Ross	(509) 336-4839
9	710 Main St.		11:35 AM	11:45 AM	1,950 sq.'	Specialty home decorations and coffee shop, antiques, high end dress shop.	Dave Cox	208-582-4161
10	516 Main St.		11:50 AM	12:00 PM	5400 sq ft for Rogue NightClub, 1729 sq ft for Sidelines Grille, 1806 for F St Bldg	Nightclub, Grille & Taphouse	Tami Meyers	(509) 552-9492